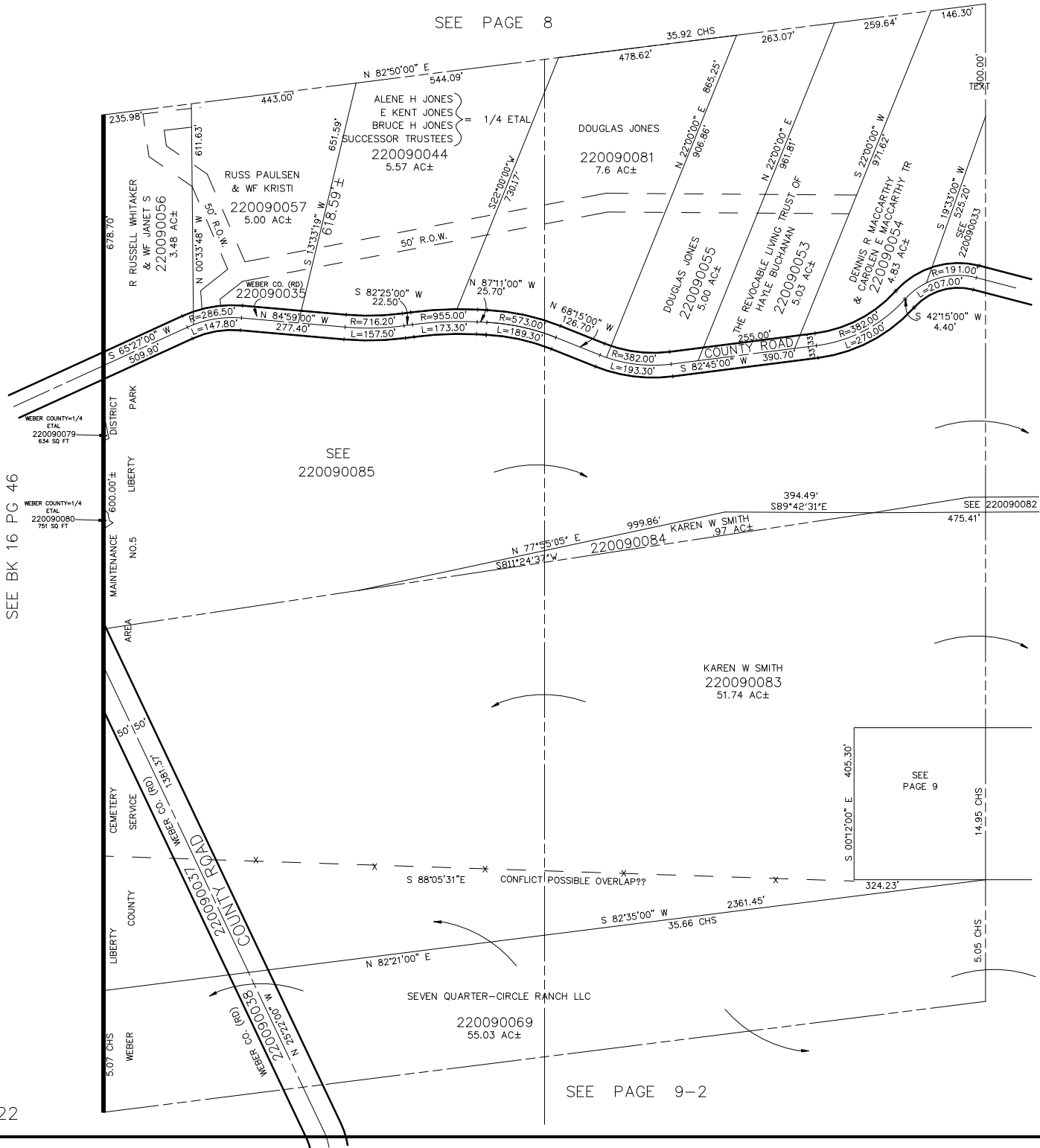


N.W. 1/4
SECTION 19, T7N., R.1E., S.L.B. & M.

LIBERTY DISTRICT
SCALE 1" = 200'

TAXING UNIT: 36

SEE PAGE 8



SEE BK 16 PG 46

SEE 220090085

SEE PAGE 9

CONFLICT POSSIBLE OVERLAP??

SEE PAGE 9

SEE PAGE 9-2